

Some notes on these process charts.

I have tried to balance keeping these charts simple with the process that can get very complex.

As always these are just a guide and if you have any issues or face an appeal/re-review seek help from your local HIV Service Supplier, Citizens Advice Bureau or lawyer. We accept no liability here.

Anomalies.

Sometimes the DWP can ask for more information in a letter form rather than sending you a DLA556 form to complete.

If you ask for an appeal, the DWP may re-review your claim anyway. You cannot assume this though.

If your appeal has failed. I have heard of one request to the Commissioners leading to a re-review of the tribunal hearing. With the decision overturned thus avoiding the escalation to the Commissioners.

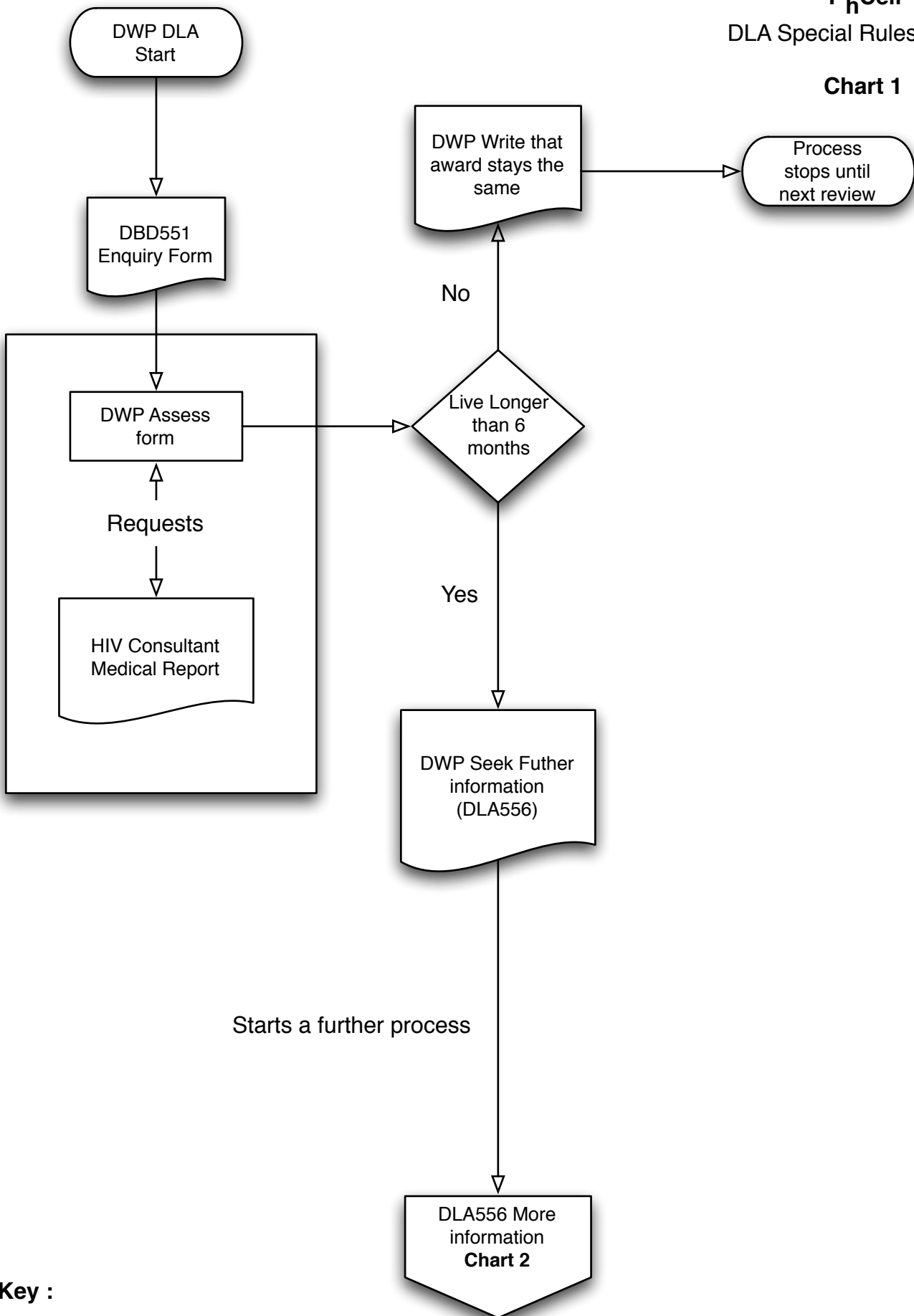
If you need more time to complete any stage ring and speak to your Decision Maker and ask.

I would recommend that if you ask for a re-review or appeal you do so in writing. Even if you have phoned them I think it advisable to follow up with a letter. This creates an audit trail if you need to pass your case on to someone else at a later date.

Feedback.

Any feedback on these charts is welcome. Please email to john@tcell.org.uk

Chart 1



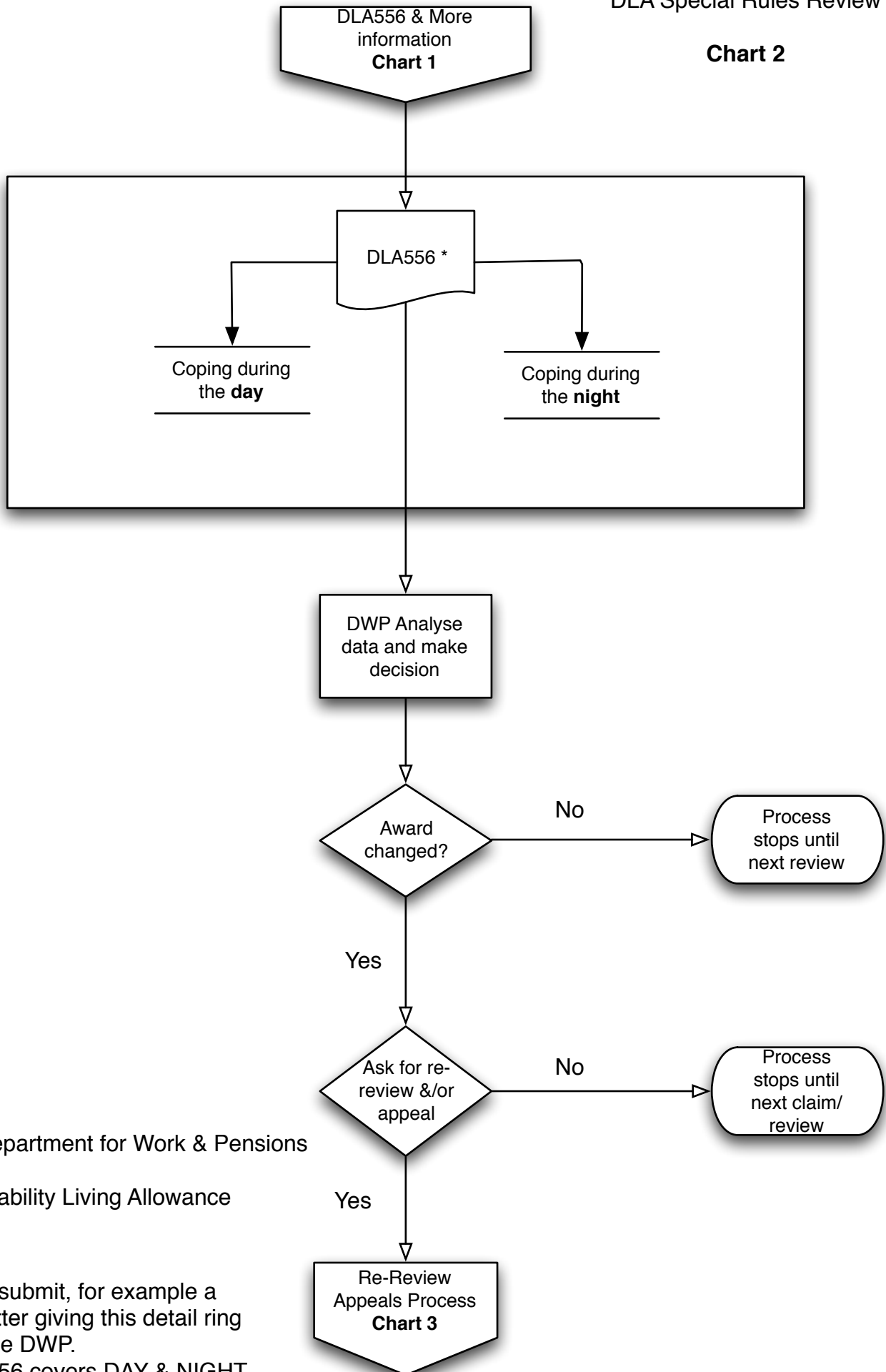
Starts a further process

Key :

DWP = Department for Work & Pensions

DLA = Disability Living Allowance

Chart 2



Key :

DWP = Department for Work & Pensions

DLA = Disability Living Allowance

* You can submit, for example a diary or letter giving this detail ring and ask the DWP.
The DLA556 covers DAY & NIGHT

T_hCell
DLA Special Rules Review
Chart 3

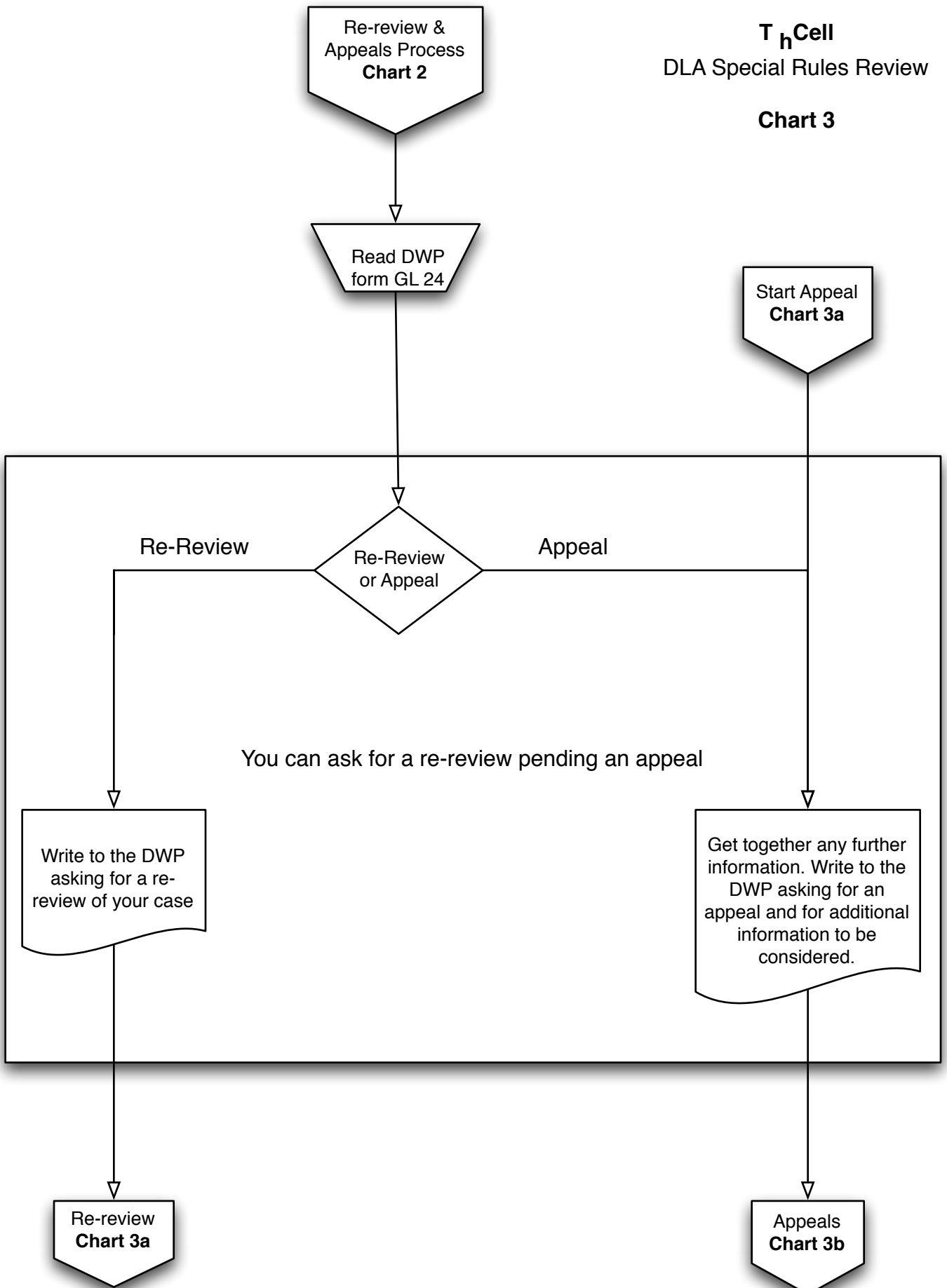


Chart 3a

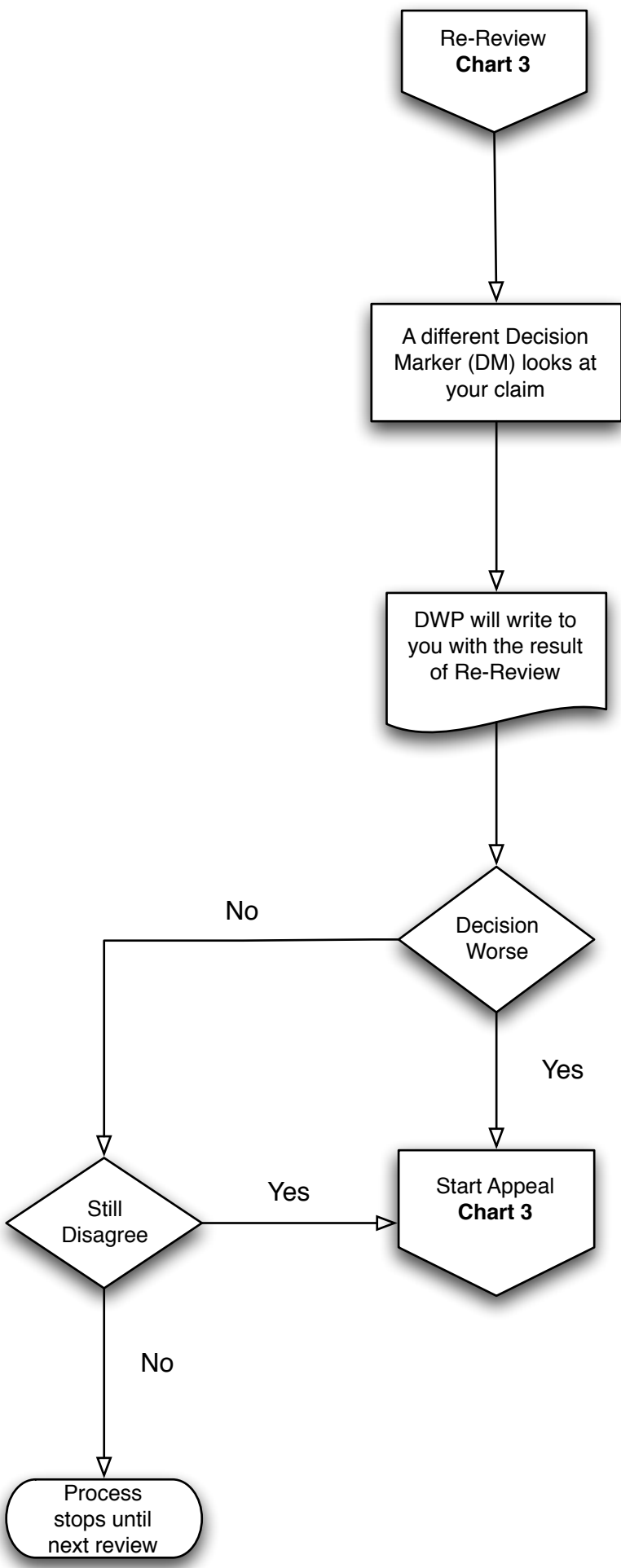


Chart 3b

Appeals
Chart 3

